

# Bound to Ride

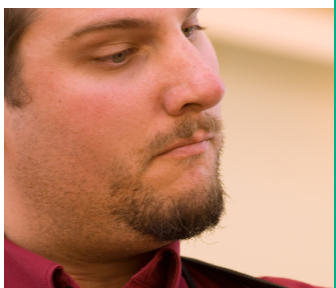
## A Bluegrass Band

**Bound to Ride** is a Northern California-based band that performs original and contemporary bluegrass and acoustic music. Since 2003, the band has been entertaining audiences at many of the best bluegrass venues in the region with original and traditional music. **Bound to Ride** is receiving national acclaim as well as an avid local following. Don't miss an opportunity to sit back and listen to the sounds of:



### **Patrick Ickes – Banjo-Vocals**

Patrick Ickes picks the five-string banjo with the hard-driving licks that anchor the band to its bluegrass roots. Born in San Francisco to the musical Ickes family, Patrick taught himself how to pick on his Grandpa's banjo at age twelve. Patrick works as a licensed aircraft mechanic and lives near Upper Lake, CA in a home that he and his wife built. An avid outdoorsman, Pat enjoys hunting with his hounds, abalone diving, spear fishing, ocean kayaking and boating.



### **Phil Cornish - Mandolin-Vocals**

Phil Cornish is a mandolin player, songwriter and lead vocalist who is turning heads with his crisp, tasteful mando style, cutting-edge melodies and "born singin' bluegrass" voice. He grew up in San Jose where he listened to his dad sing and play bluegrass for more than twenty years. Phil claims that he took up the mandolin because it was easy to carry between classes at UC Berkeley where he went to school. Today, when Phil is not playing music, he can be found playing Frisbee golf or chess on the Internet.



### **Larry Chung – Guitar-Vocal**

Multi-instrumentalist Larry Chung has always loved playing music. Born and raised in rural Illinois, Larry played classical violin and piano and eventually moved to the Bay Area to attend college at Stanford University. Over the next several years, he taught himself the guitar, the banjo, the mandolin, the Dobro, and the double bass. He has lived, worked, and performed in Germany, South Korea, Washington, D.C., and Chicago. When not fronting his band Cabin Fever ([www.cabinfeverbluegrass.com](http://www.cabinfeverbluegrass.com)), Larry is also a talented music instructor and dedicated arts administrator. He currently teaches all of the instruments he plays, and has over 60 students ranging in age from 3 to 75. When performing with Bound to Ride, Larry plays a 1959 Martin D-28 and a 1981 Santa Cruz koa D.



### **Elida Ickes – Bass-Vocals**

Providing solid rhythm is bass player and vocalist Elida Ickes. While living in Millbrae, CA, Elida played with several SF Bay Area bands. Soon after moving to Twain Harte, in the Motherlode area of the Sierra's, she joined an all-female band playing music of the Gold Rush Era and also plays with a group called Fiddle's Etc. She is a member of CBA, IBMA, and the Bluegrass Quilters. When she is not playing music, you might find her quilting. Her favorite bass players are Barry Bales, Mike Bubb, and of course, Missy Raines! Her favorite banjo and Dobro players are Patrick and Rob Ickes.